



Plus



EN - AXD is a company operating in the Furniture field, specialised in the production of the aluminium profiles, finalized for the realization and / or idealisation of articles and programs used in this large market field.

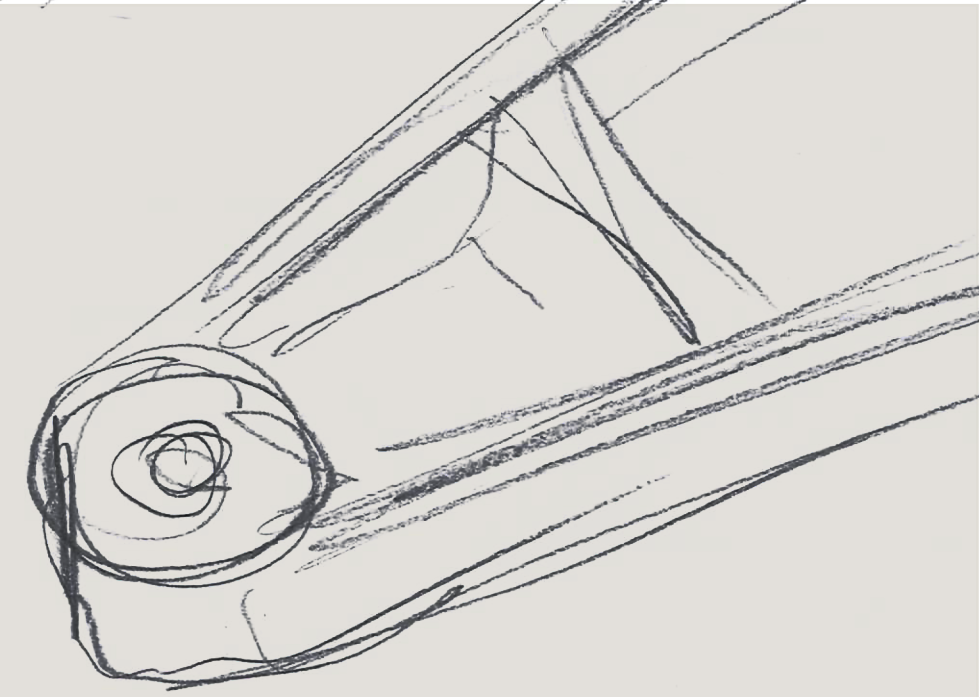
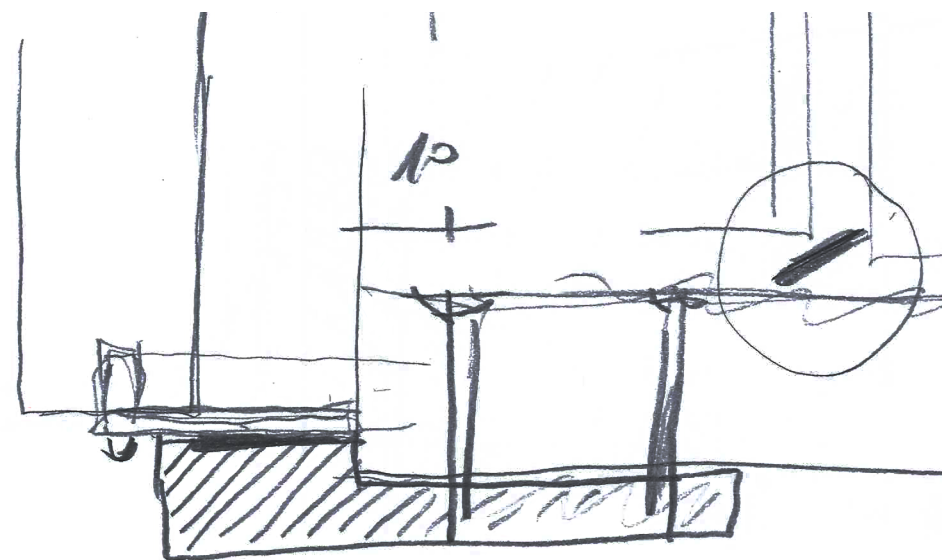
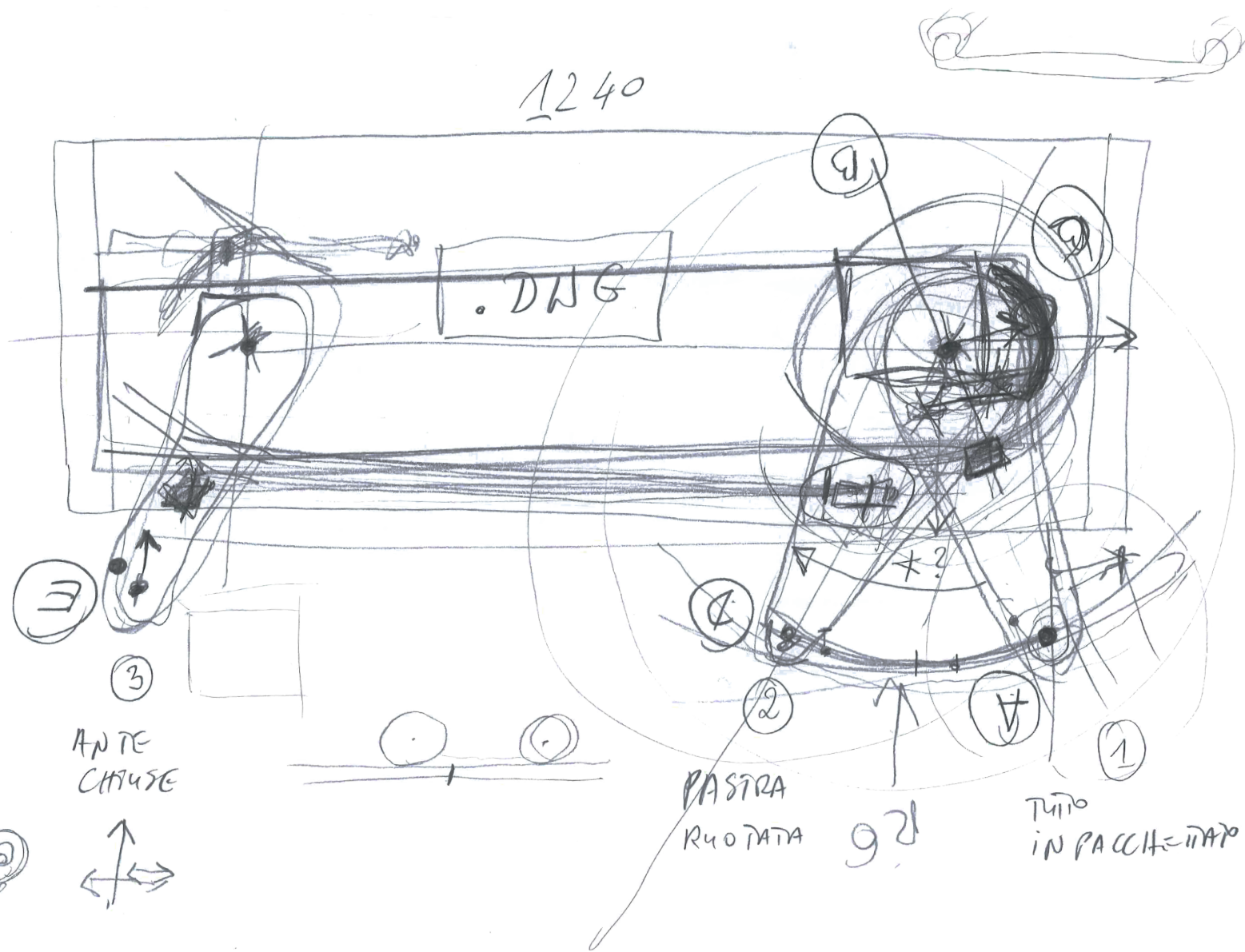
The aluminium used in this field is continuously growing both ornamentally and structurally, thanks to its lightness, its ductility and to the wide choice of finishing and colours, satisfying different esthetical and technical choices.

Since many decades AXD is working with the most important national and international Companies in the furniture field.



INDICE

1.	COMPONENTS	pag. 8
2.	COMPONENTS HINGE DOOR IKS 180	pag. 10
3.	ASSEMBLING INSTRUCTIONS	pag. 12
4.	RULES	pag. 18

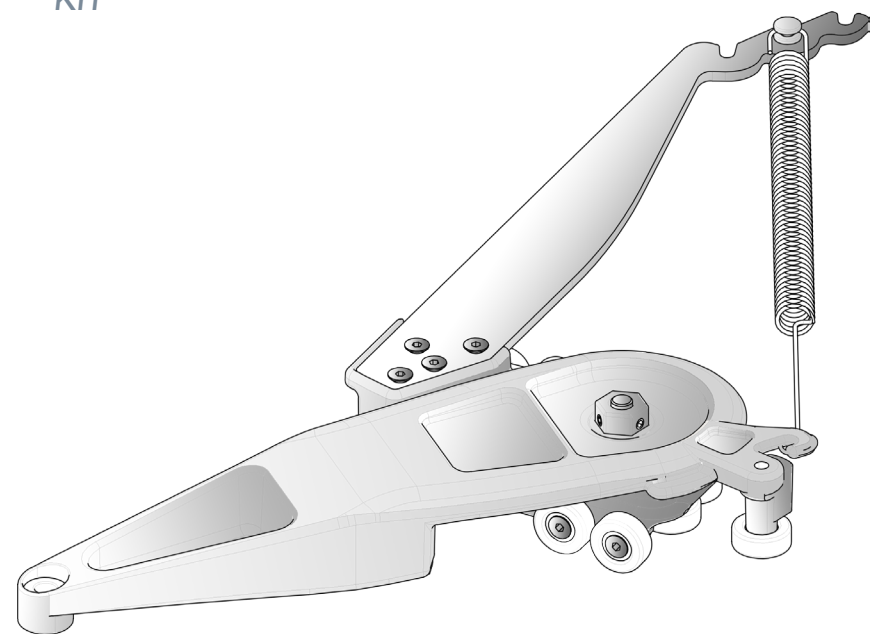


PLUS: AL DESIGN

EN - PLUS is the new integrated system for IKS FOLDING doors: an aluminum profile is screwed on the top of the wardrobe and inside it there is a sliding carriage with an arm. The opening and closing of the doors is set by two CAM which follow their movement. The doors, which are screwed to the arm of the system, are folded to an opening of 160°, allowing the opening of any drawers. Doors use our IKS 180° hinges and an aluminum folding hinge which is placed between the two doors.

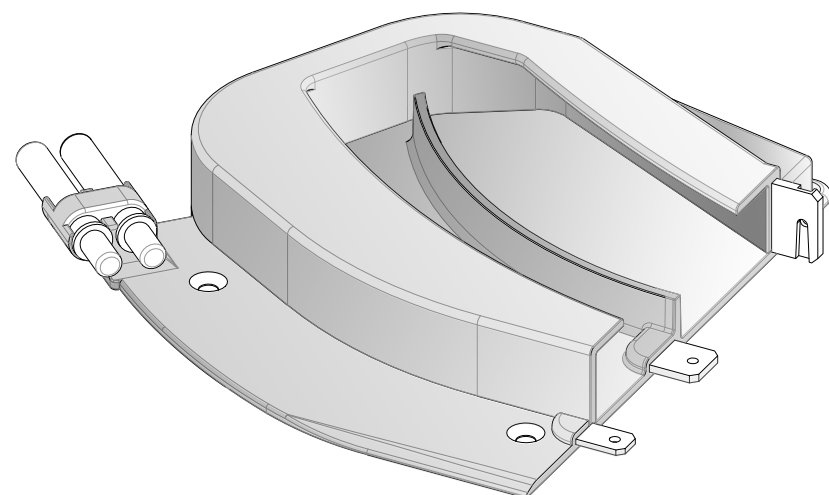
1. COMPONENTS

a. KIT



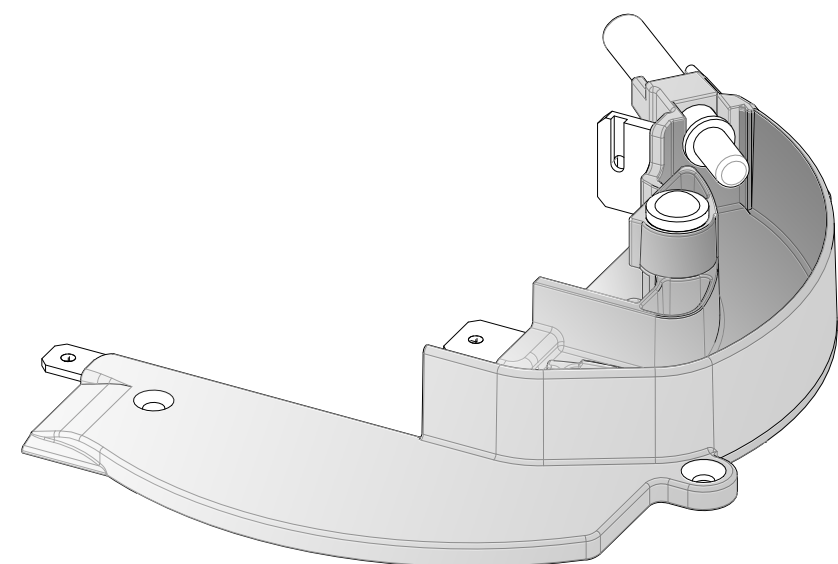
Trolley with arm

EN - Sliding carriage with rotating arm, made up of 15 wheels which allow the rotation of the leaf to 180 degrees. The spring allows the trolley to be cushioned during the opening phase and it can be positioned according to the weight of the doors.
Standard Finish: Painted Black.



CAM Stop Side

EN - Closure that allows the trolley with the arm to close the doors. Provided with two smooths to slow down the closing of the door.

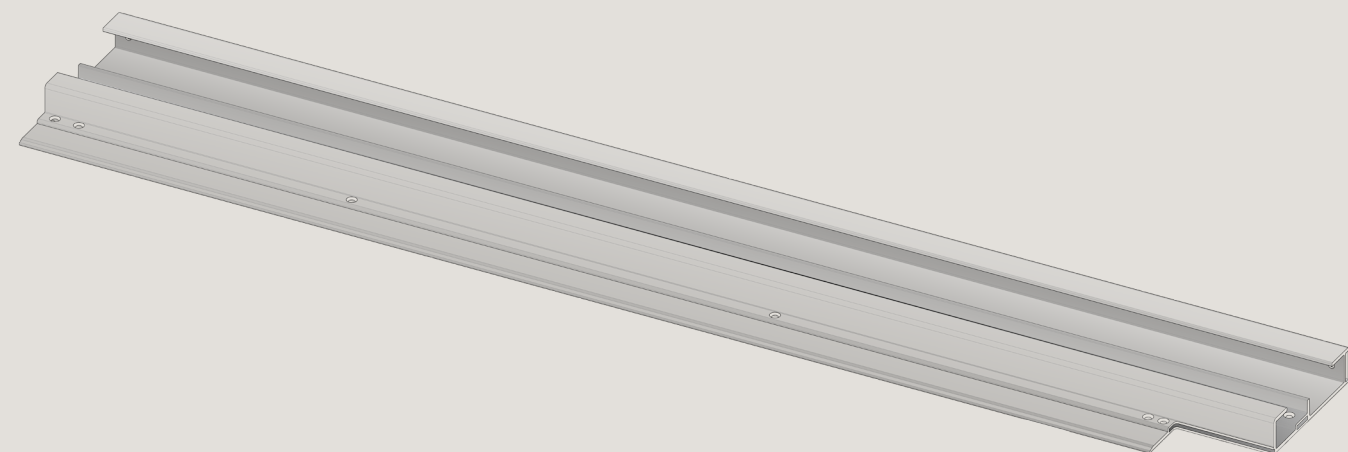
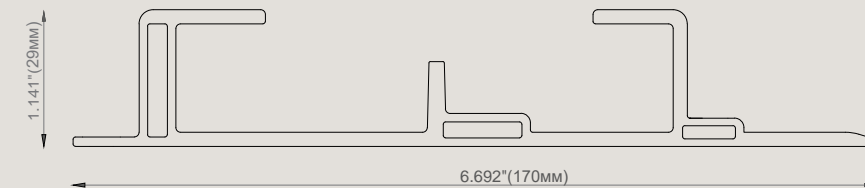


CAM Hinge Side

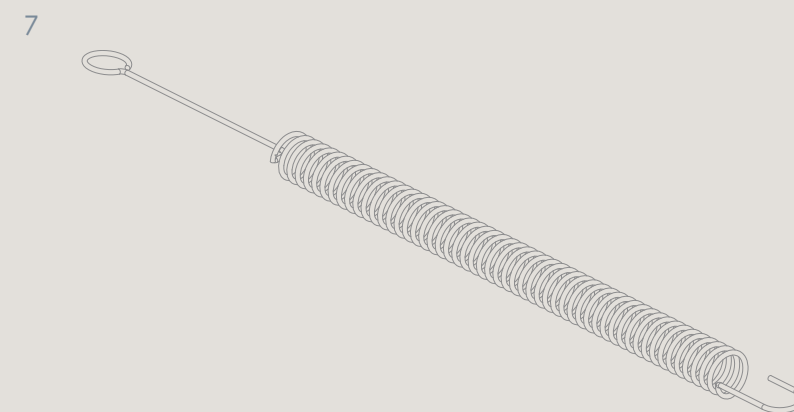
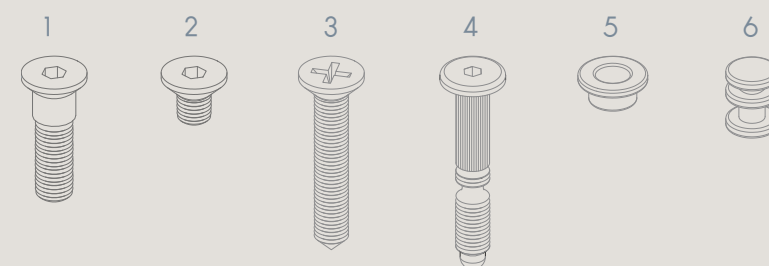
EN - Closure that allows the trolley with the arm to open the doors. Equipped with smooth to slow down the opening and a system that does not allow the return of the door.

b. DIE

EN - Lorem ipsum dolor sit amet, consectetur adipiscing elit, sed do eiusmod tempor incididunt ut labore et dolore



c. HARDWARE

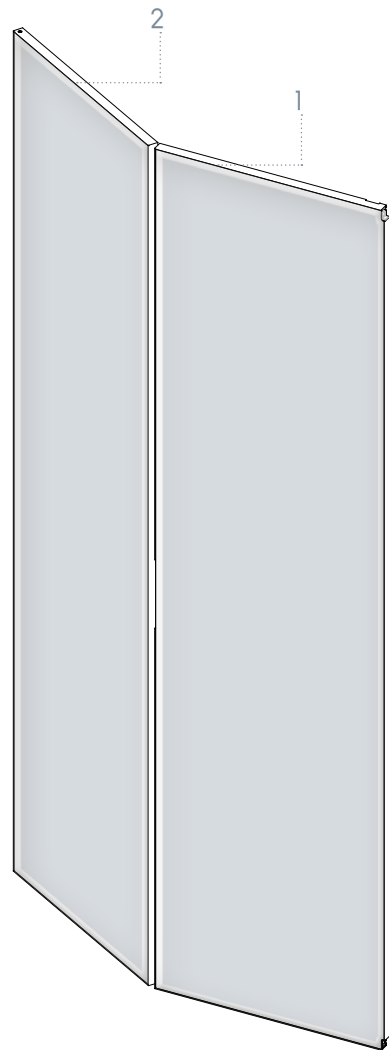


EN - PLUS is equipped with additional hardware for its assembly. For their use, refer to the assembly instructions

1. Special countersunk head Screw M6x19 - tot.4
2. Socket countersunk head screw TSEI M4x6 - tot.6
3. Cross recessed ctsk wood screws TSP+ 4,0x25- tot.18
4. Special countersunk head Screw TSEI M8x54 - tot.1
5. Bushing d.16mm - tot.2
6. Turned piece for adjustable hook for spring - tot.1
7. C85 wire tie rod Spring - tot.1

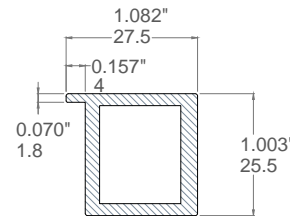
2.

COMPONENTS HINGE DOOR IKS 180



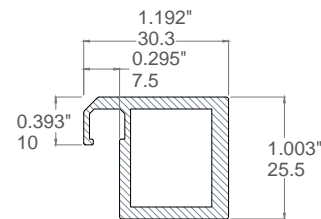
IS-954

IKS door profile with glue glass



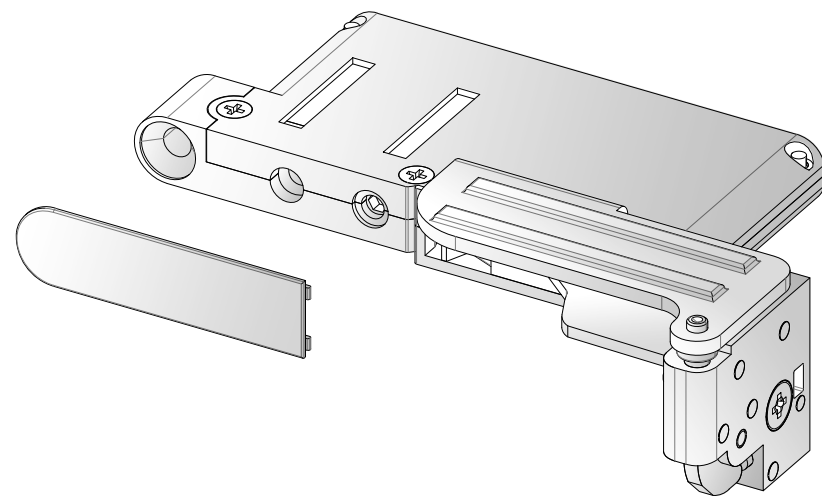
IS-955

IKS door profile with gasket for glass



ANTE IKS 180 Hinge Doors IKS 180

EN - Plus system works with two doors, one main and one secondary, from the IKS series. (with die 954 or 955). The main door has the IKS180 CNC, the second one has instead the connection with the PLUS. The two doors are joined together by a hinge.

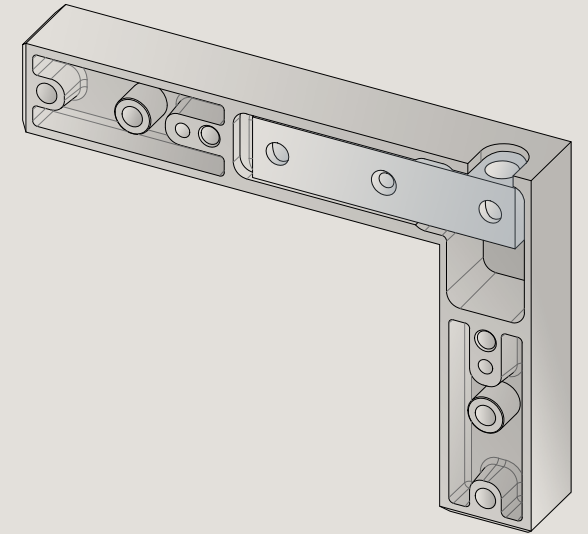


IKS Hinge IS-CE-180

EN - Plus system works with the use of two IKS hinges with a maximum opening of 160°. The hinge is completed with the cover IS-MO-PI

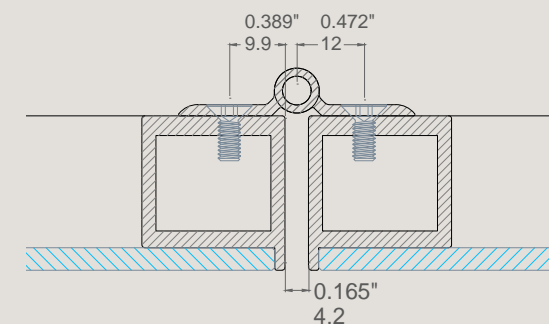
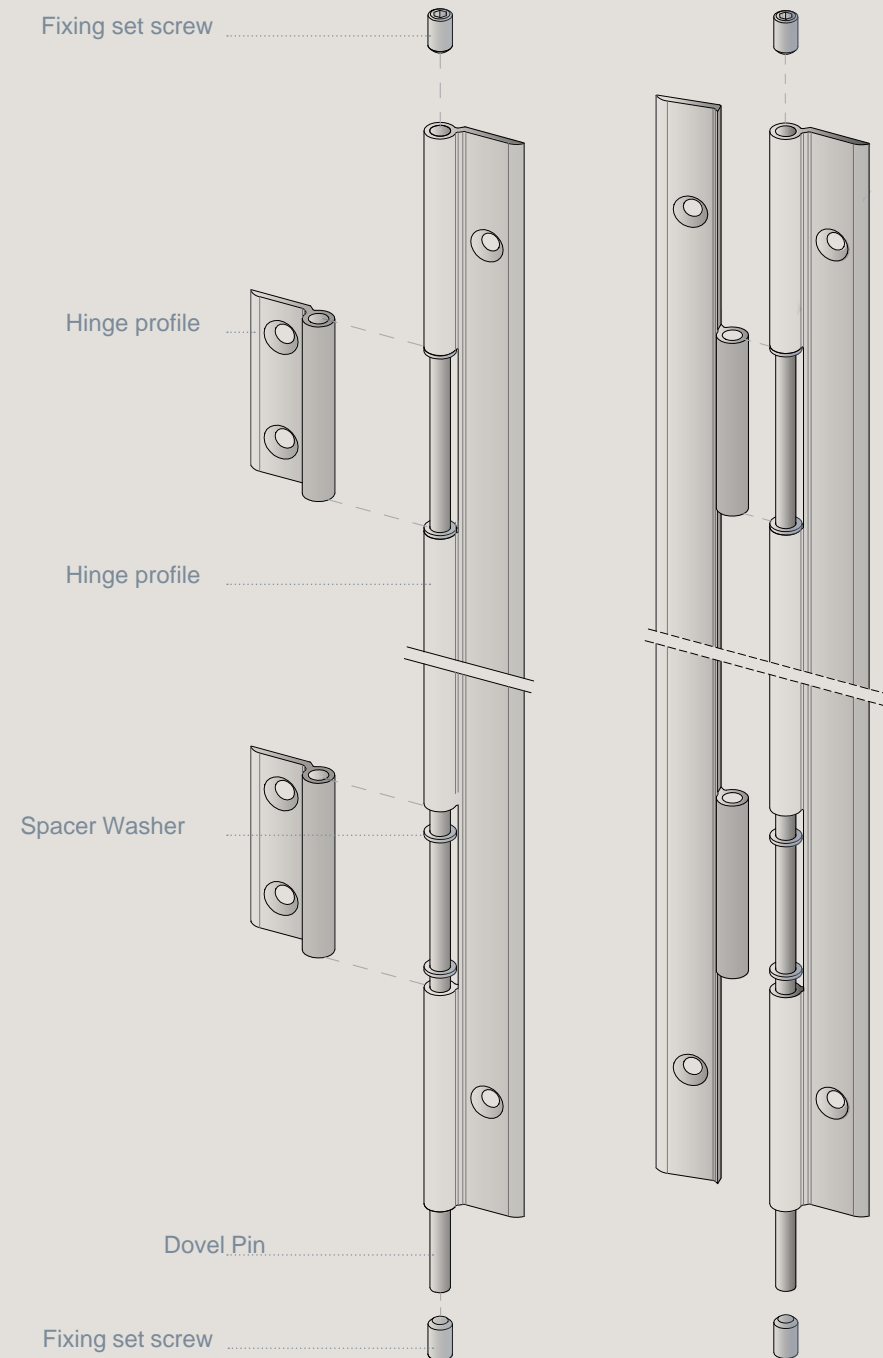
IKS Hinge for PLUS

EN - The right/left connecting corner joint for IKS door for PLUS (with pre-assembled block PS-BLOC-T) must be inserted in the corner of the secondary leaf with connection to PLUS



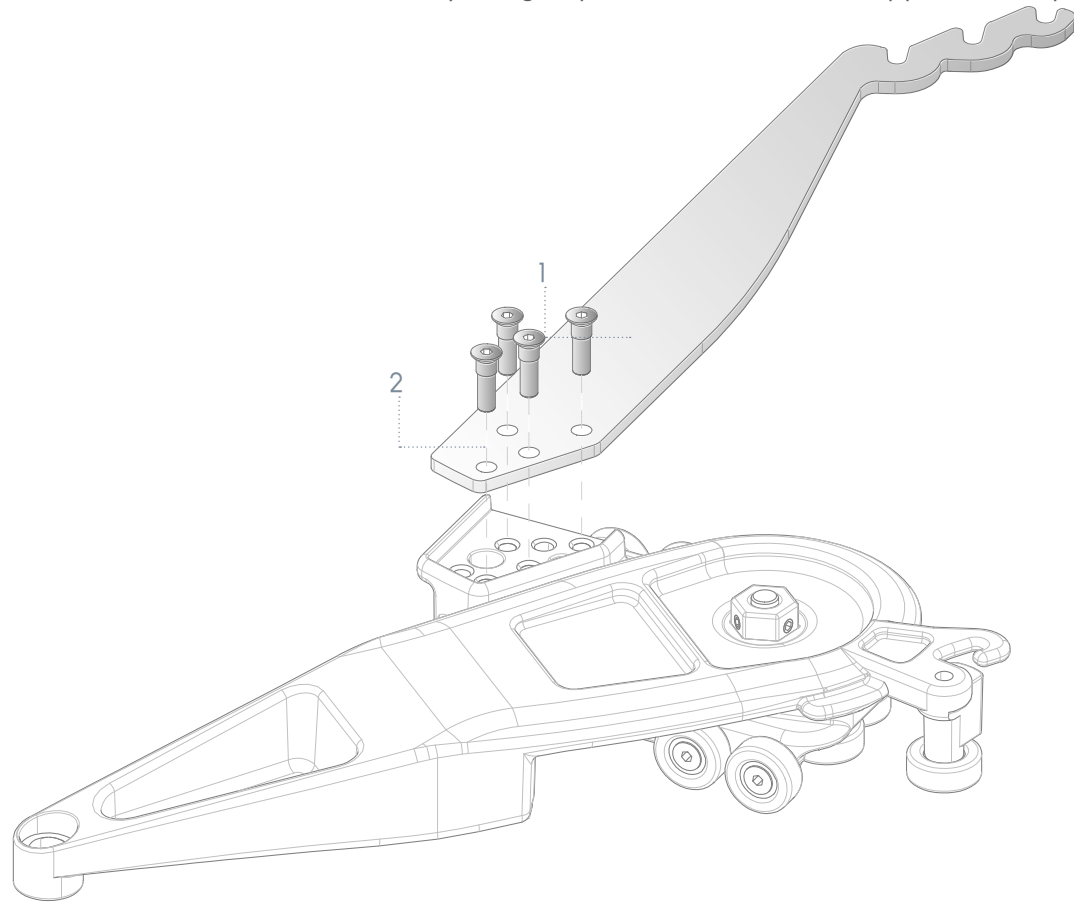
PLUS Hinge for IKS doors with PLUS

EN - The two doors, main and secondary, are connected to each other with a profile hinge, which arrives already drilled for fixing to the doors using metric screws. The hinge works through a pin and allows the rotation between the two profiles through spacer washers.

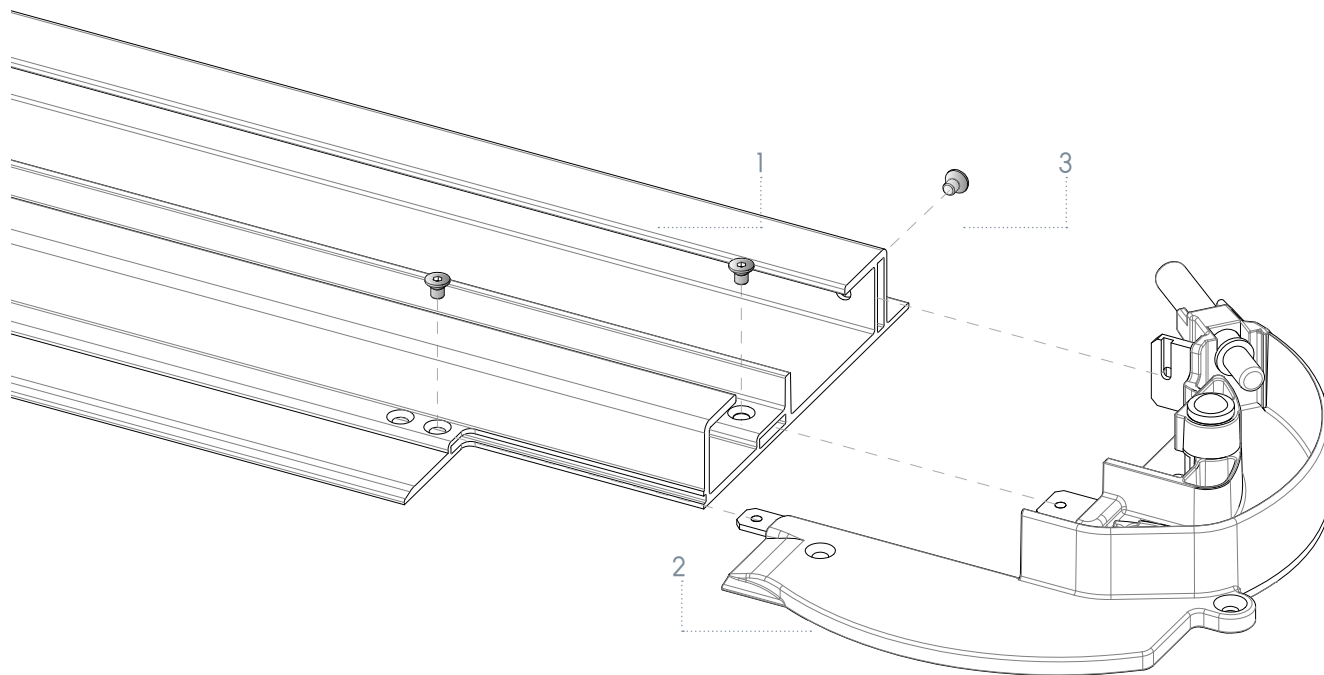


3. ASSEMBLING INSTRUCTIONS

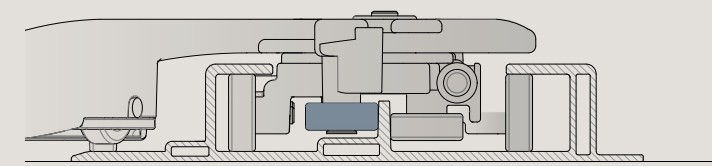
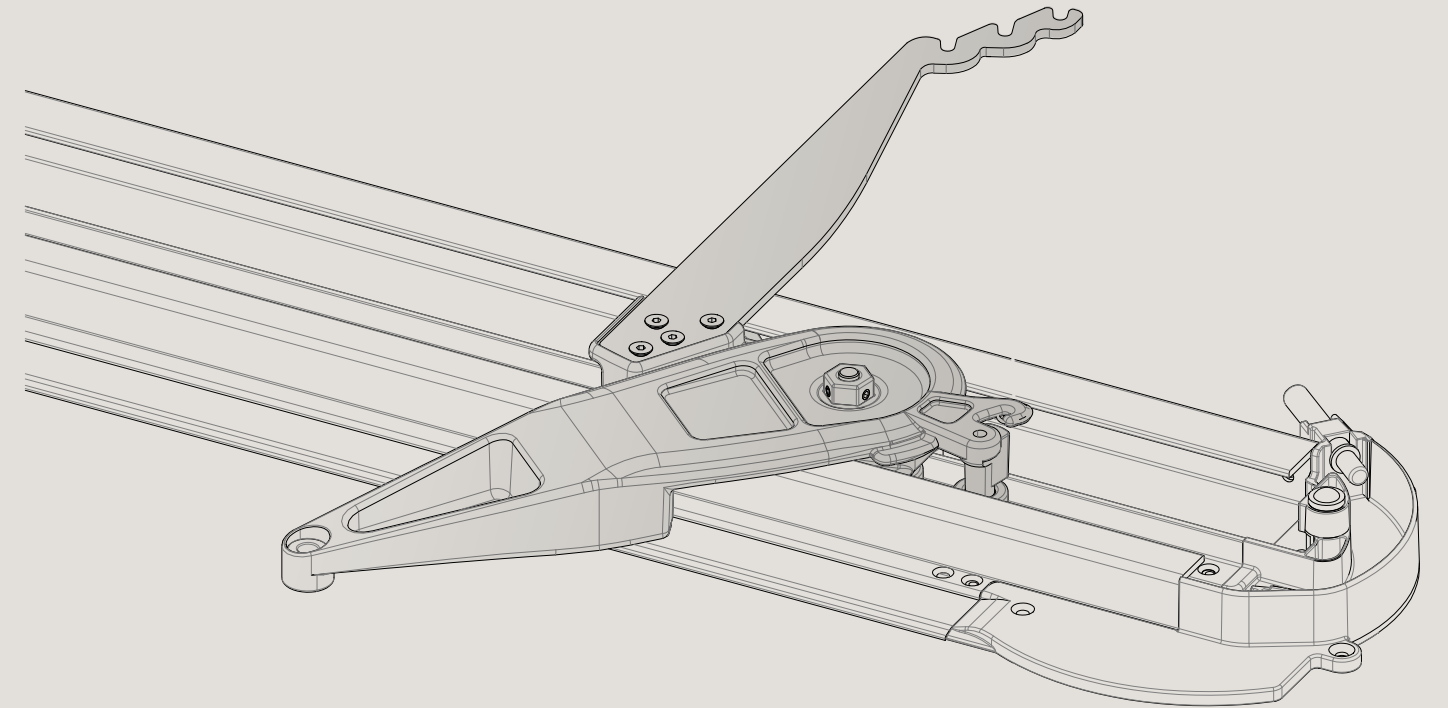
EN - 1. Put the bracket to the trolley using 4 special screws M6x16 (supplied in the package).



EN - 2. Screw the hinge side CAM to the aluminum profile with 3 screws M4x6

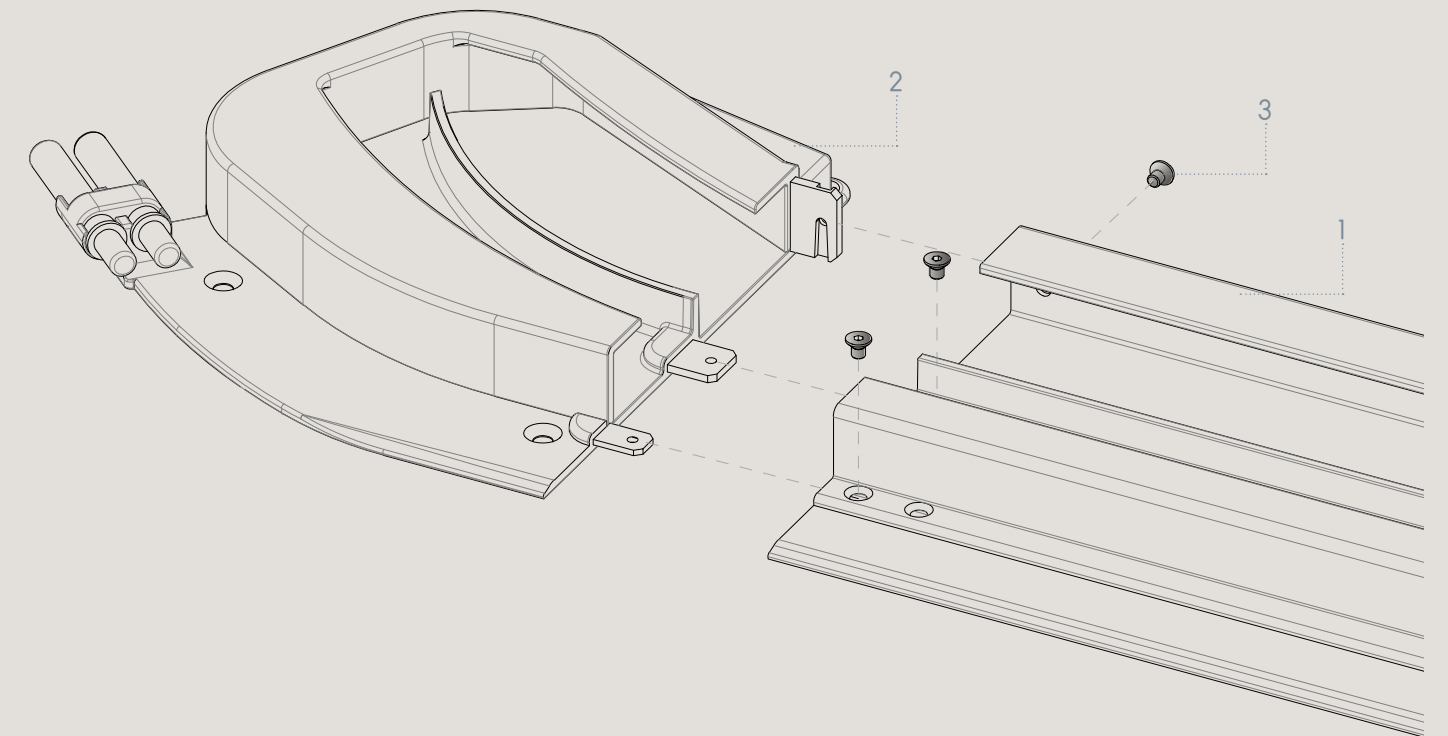


EN - 3. Insert the carriage (pre-assembled as point 1.) into the profile so that it can slide.

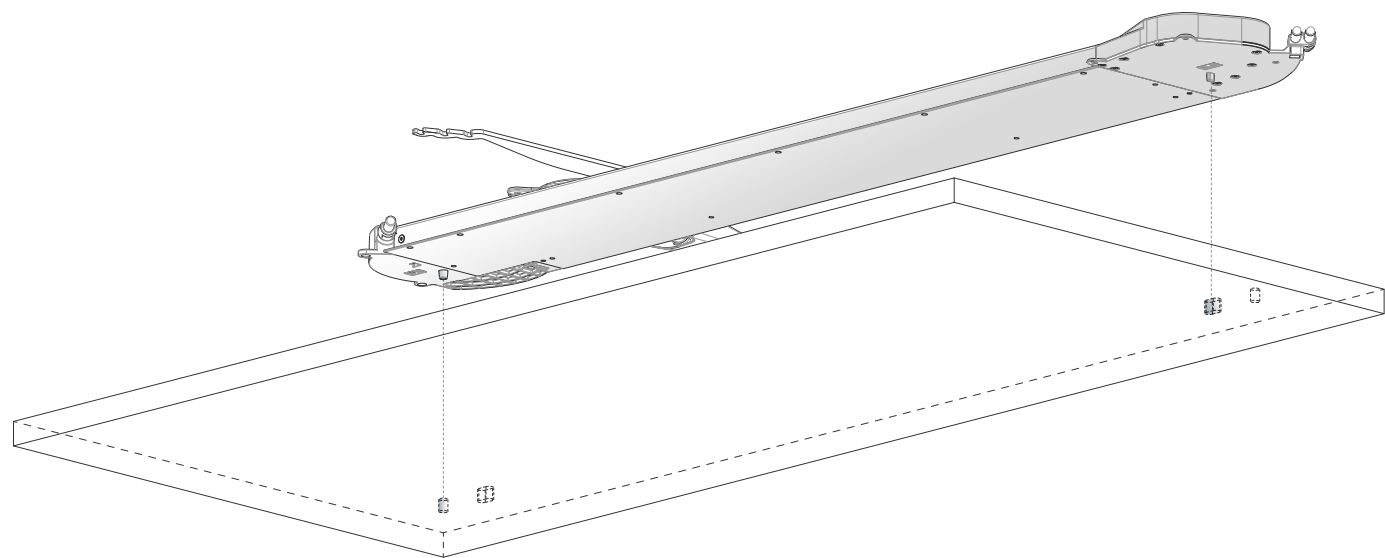


EN - ATTENTION: Check the horizontal wheel position is like the two images

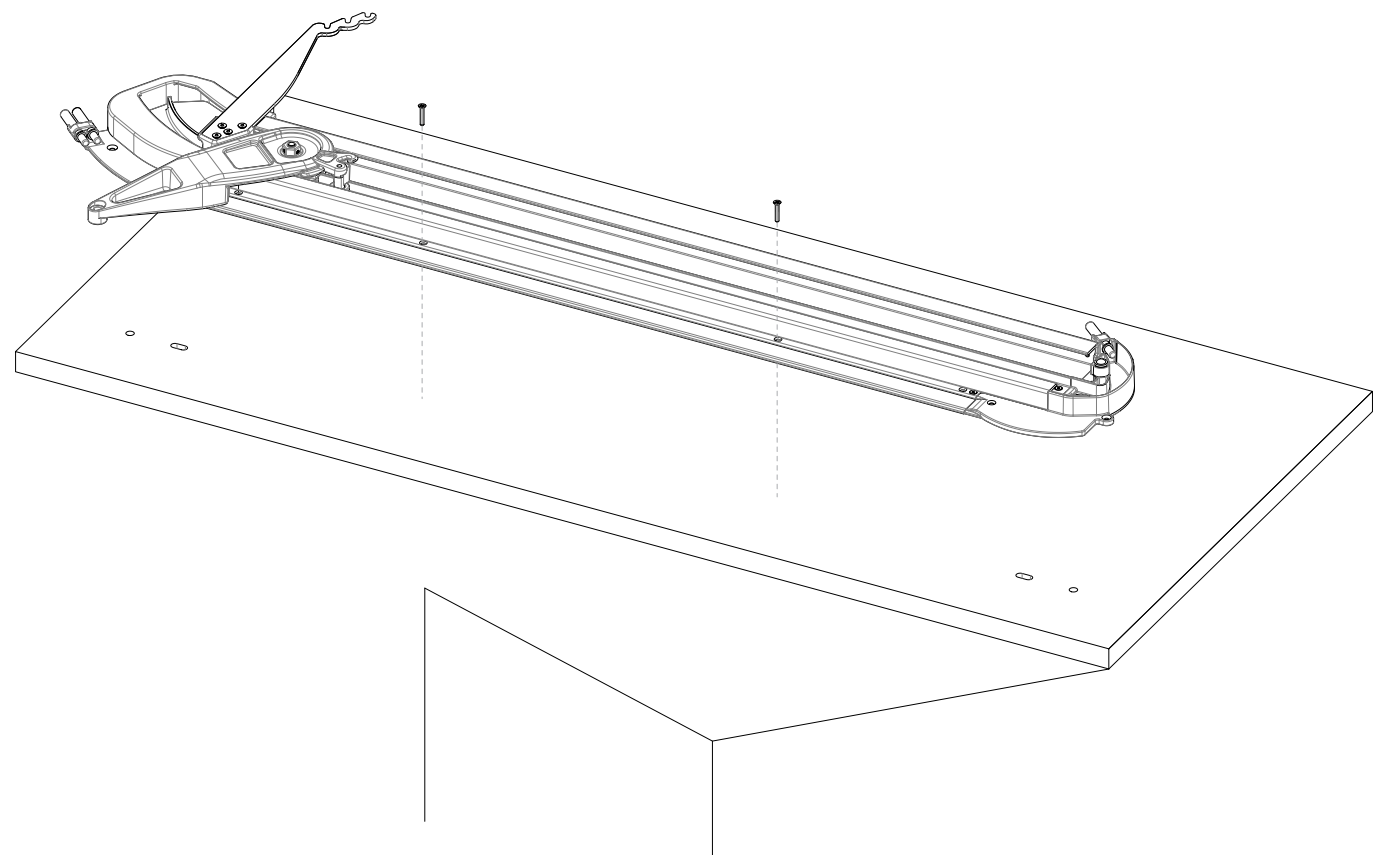
EN - 4. Screw the other side CAM to the aluminum profile with 3 screws M4x6



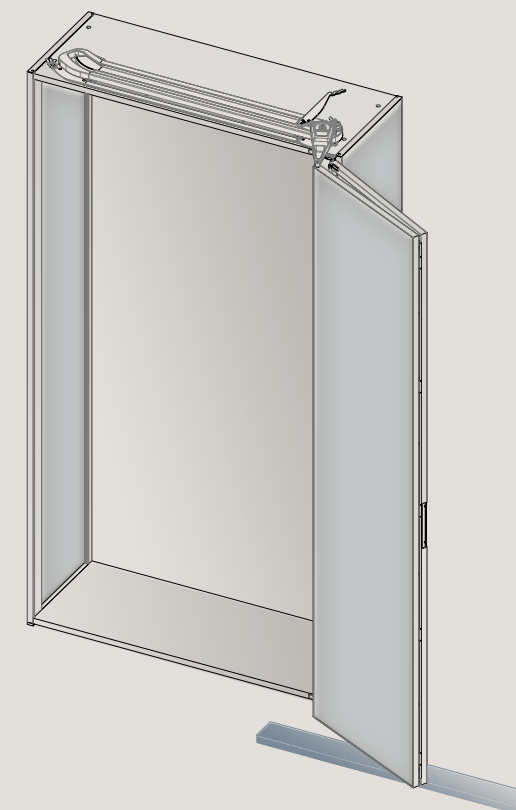
EN - 5. Correctly position the PLUS on the top of the cabinet. The correct positioning of the PLUS is given by the pre-holes on the top in which the guides of the two CAMs are inserted.



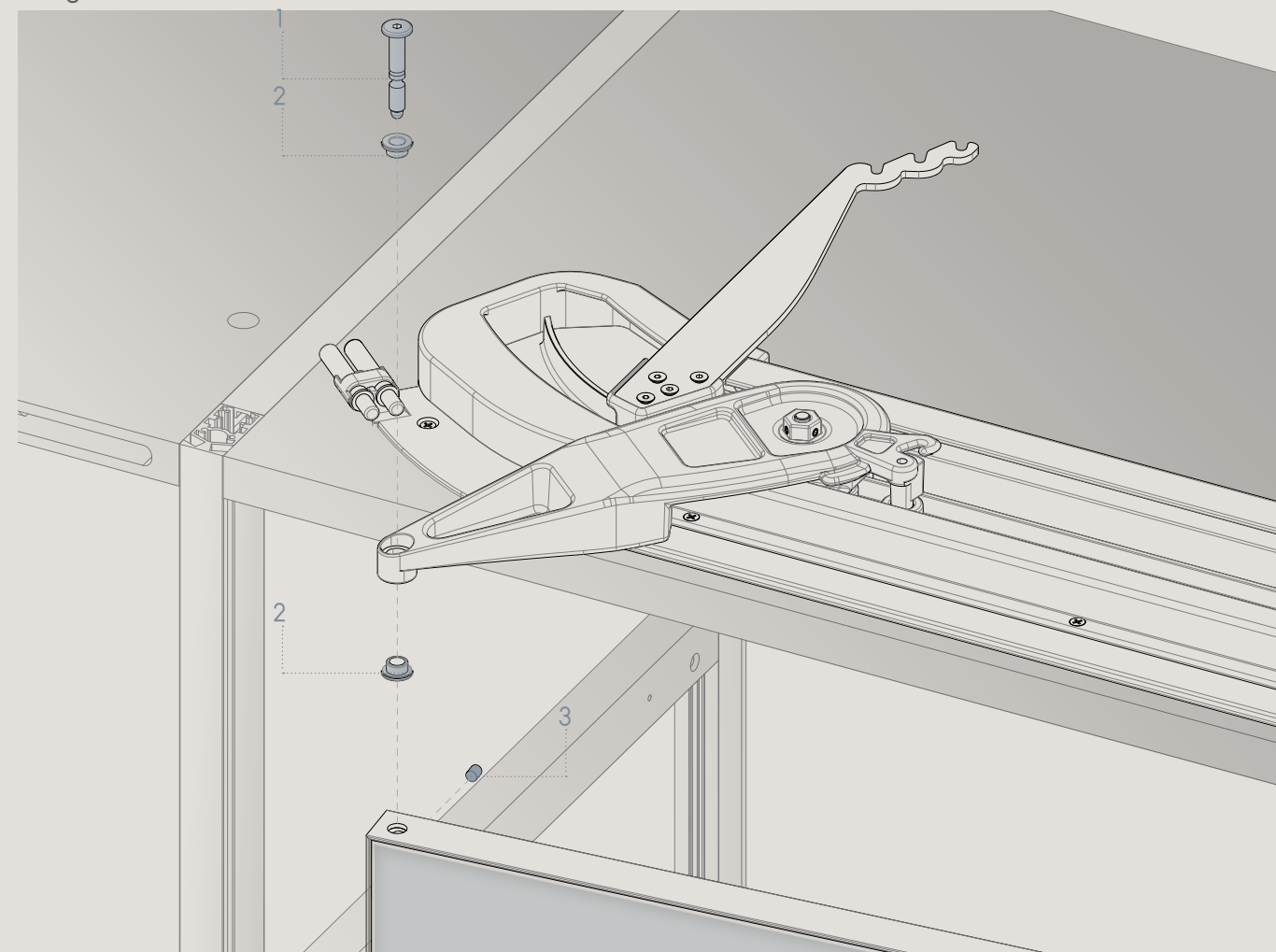
EN - 6. Screw the PLUS group to the top of the cabinet with self-tapping screws for wood 4x25, using the countersunk pre-holes on the profile and the two CAMs.

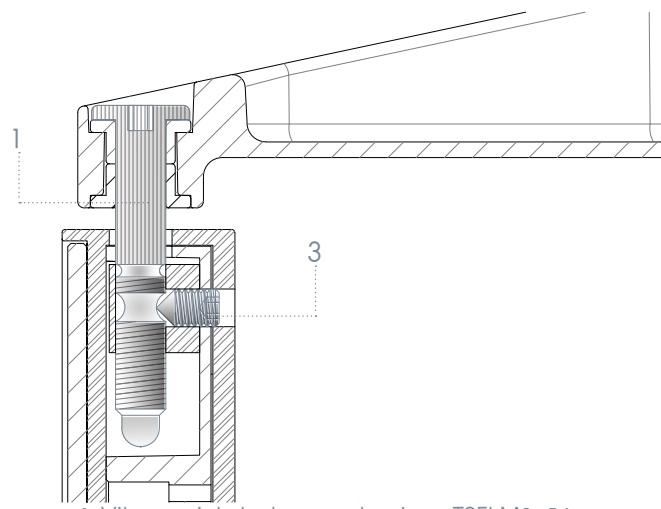


EN - 7. Mount the doors on the wardrobe using the IK180 hinges. **Be careful** during this step and until the PLUS system is fully assembled, place a piece of wood under the doors to prevent the door from sagging.

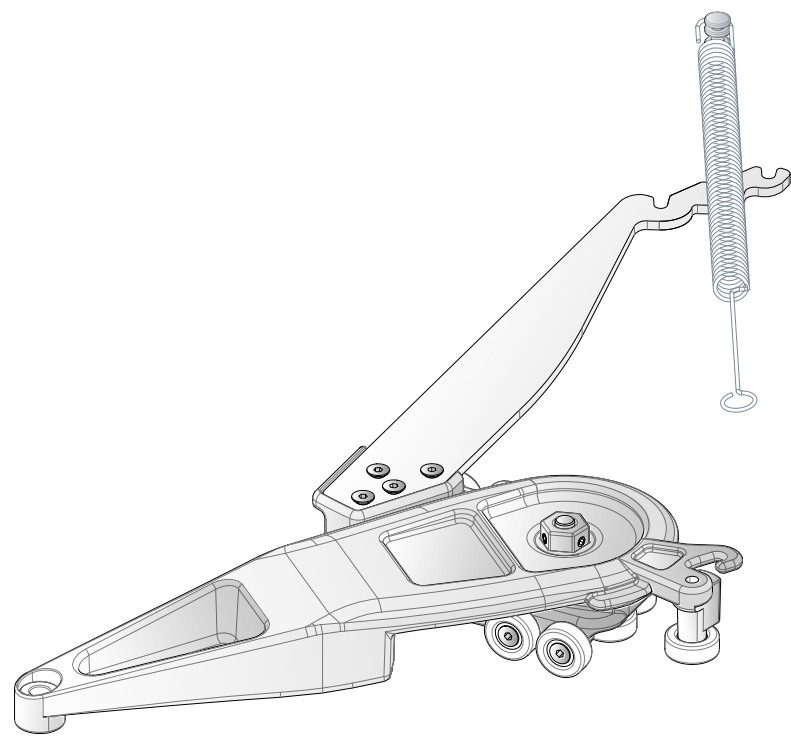


EN - 8. Screw the arm to the leaf with the special M8x54 screw. Fix the screw with the M6x 10 grub screw through the hole on the back.

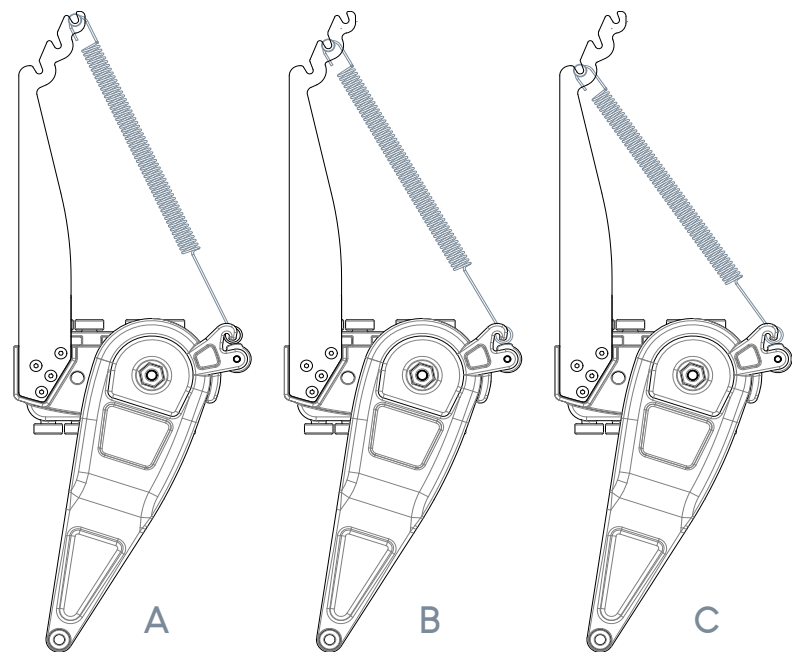




1. Vite speciale testa svasata piana TSEI M8x54 -
2. Boccia d.16mm

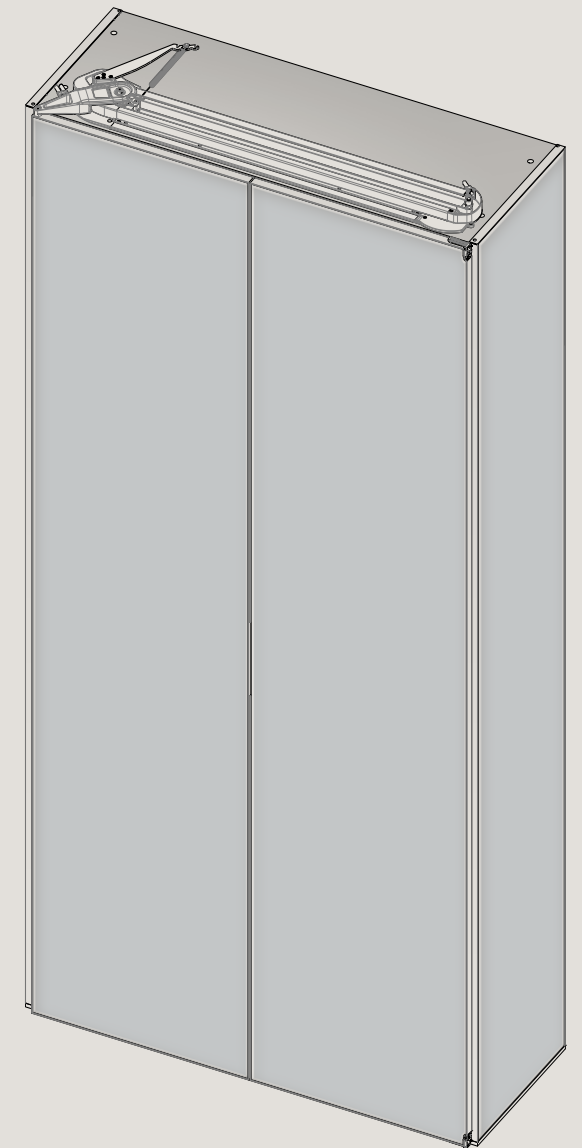
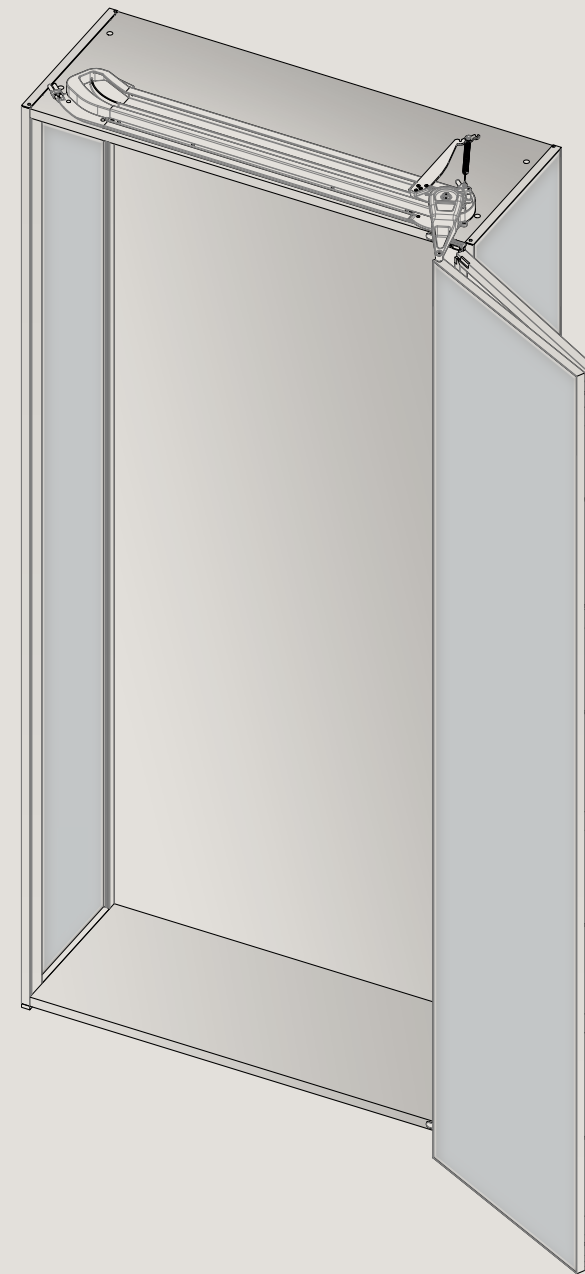


EN - Install the spring using the hook rod, pulling it from the plate to the arm hook. Start by placing the spring in the middle position. In case of need, the spring can be moved to work under traction.



EN-
Position A: Spring with high traction
Position B: Spring with medium traction
Position C: Spring with low traction

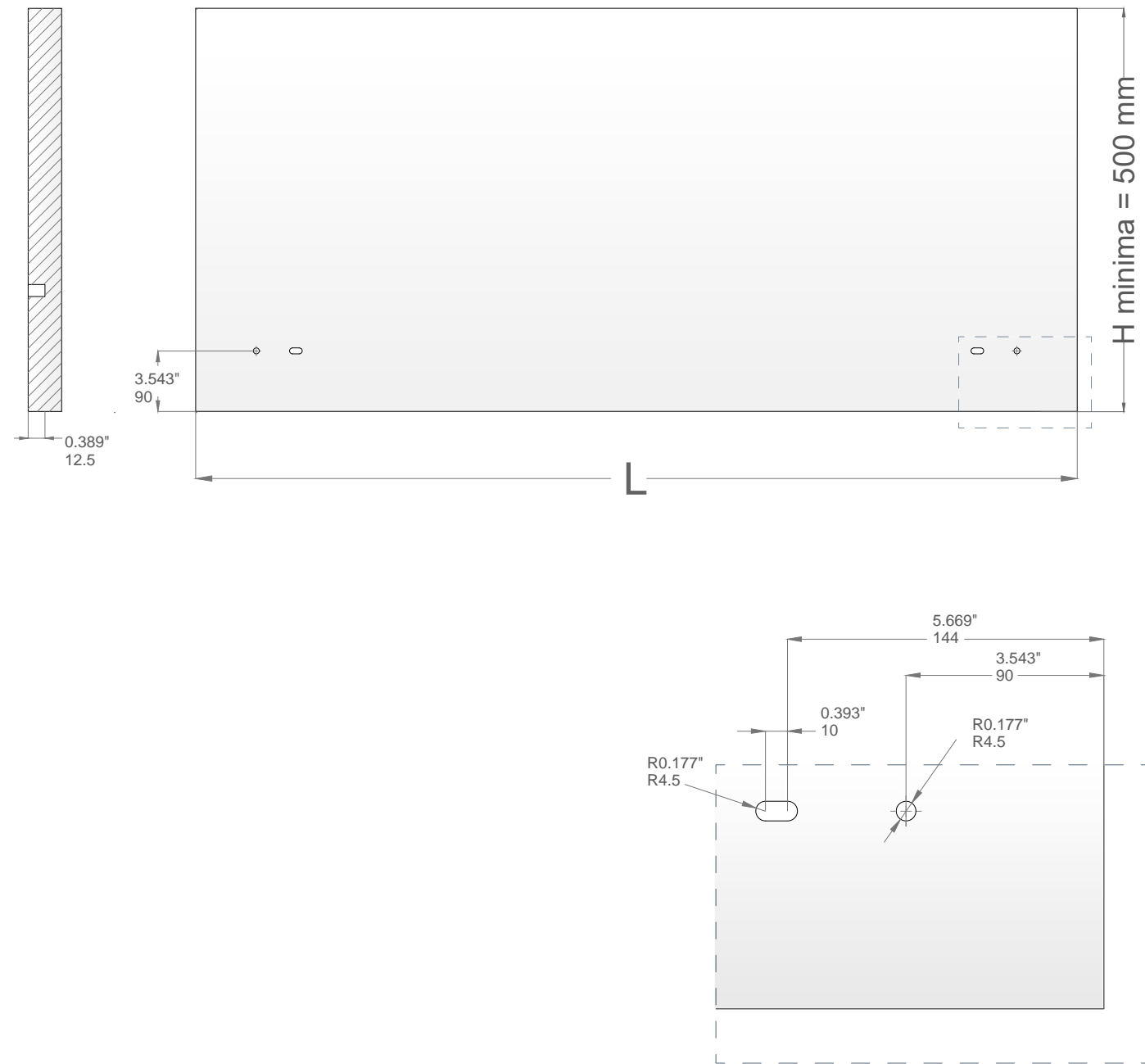
IT - 10. Iniziare ad utilizzare il Plus.
EN - 10. Enjoy Plus Sistem



4.
RULES

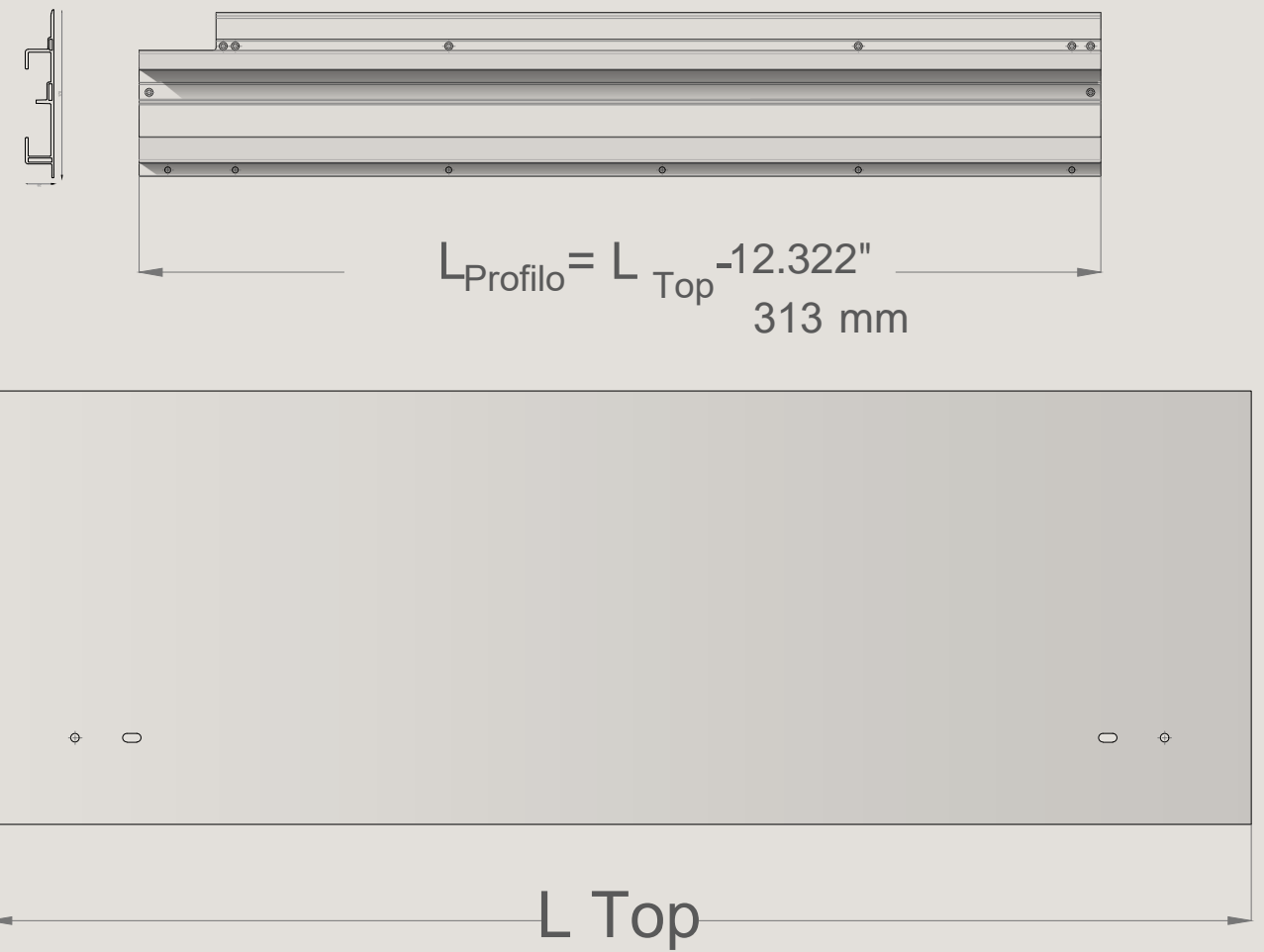
a.
Top Rule

EN - The top of the wardrobe must be worked with the 4 symmetrical holes shown here. In this way, whether the Plus is for left or right opening, its positioning will be guided and correct through the shims on the cams

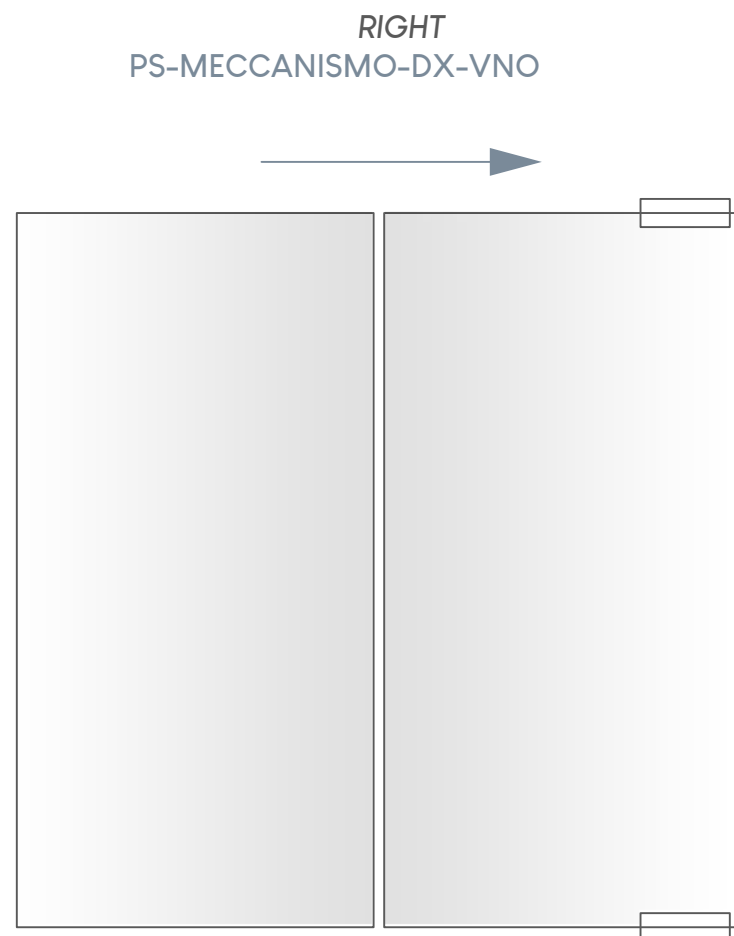
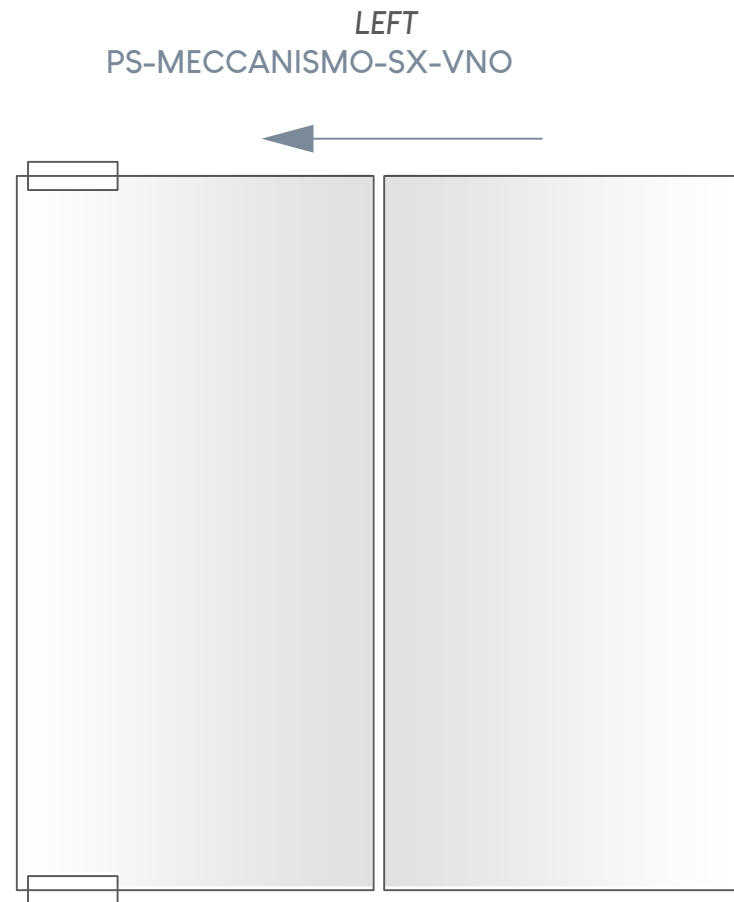


b.
Profile Rule

EN - The profile must be cut following the rule described below.
ATTENTION: cut on the side without notch



c. *Opening Direction Rule*



b. *Design of Drawers Rule*

EN - The complete opening of the doors allows the insertion of drawers inside the wardrobe. Attention: there is a space of 32 mm between wardrobe and the open door.

